

Carolina Conductor



Volume 6 Number 3

Monthly Newsletter of the Carolina Railroad Heritage Association, Inc.

© March 2019

Preserving the Past Active in the Present Planning for the Future

Web Site: hubcityrrmuseum.org
Facebook: Carolina Railroad Heritage Association

Meeting Site:
Woodmen of the World Bldg.
721 East Poinsett Street
Greer, SC 29651-6404
Third Friday of the Month at 7:00 pm

**Hub City Railroad Museum and
SOU Rwy Caboose #X3115:
Spartanburg Amtrak Station**
298 Magnolia Street
Spartanburg, SC 29301-2330
Wednesday 10-2 and Saturday 10-2

Officers:

President:
David Winans - 864-963-4739
Vice-President:
Steve Baker - 864-297-0918
Secretary/Treasurer:
Marv Havens - 864-292-3852

Directors:

Lee Dobbs - 864-268-3939
Bruce Gathman - 864-850-3642
Duane Heard - 810-623-7444
Jim Hopkins - 864-859-0189
Bob Klempner - 864-431-5409
Mac McMillin - 864-624-9658

Mailing Address:

2123 Old Spartanburg Road
Suite #129
Greer, South Carolina 29650-2704

Newsletter Editor:

Bruce Gathman
shaygearhead@bellsouth.net
Articles can be submitted anytime.

South Carolina Railroad History

Although South Carolina never developed a railroad network comparable to those in most northern states, it nevertheless gained recognition as a railroad pioneer in the United States. Chartered in 1827, the South Carolina Canal and Rail Road Company (SCC&RR) ran its first train on Christmas Day in 1830, the initial railroad line in the South. When its 136-mile line between Charleston and Hamburg was completed in 1833, it was the longest continuous railroad line under single management in the world. Although not an immediate success, the SCC&RR (later reorganized as the South Carolina Railroad) touched off a railroad mania in antebellum South Carolina. Several new railroads were chartered by the General Assembly, including the ambitious Louisville, Cincinnati, and Charleston Railroad, but a chronic lack of investment capital and a generally stagnant economy dampened most railroad efforts in South Carolina throughout most of the 1830s and 1840s.

To stimulate additional railroad development, in 1847 the General Assembly established a revolving fund to provide state aid to railroad construction. This aid, coupled with a revived economy, created a rail-

Continued on Page 4 - SC Railroads

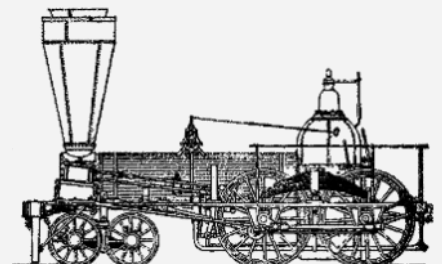
South Carolina Canal and Railroad Company Locomotive Names in 1838

The original railroads were very local and personal things to their communities but also showed their expectations and intentions. This is most evident in locomotive names, instead of numbers.

This is an 1838 list of locomotives in service on the South Carolina Canal and Railroad Company:

Alexandria, Allen, Augusta, Barnwell, Branchville, Charleston, Cincinnati, E. Horry, Edisto, E.L. Miller, Franklin, Georgia, H. Shultz, Kentucky, Lafayette, Marion, Moultrie, Native, Ohio, Philadelphia, Sumter, Tennessee, Vulcan, Washington, Wm. Aiken, Wm. Penn

Source: Railway and Locomotive Historical Society Bulletin No 101, October 1959

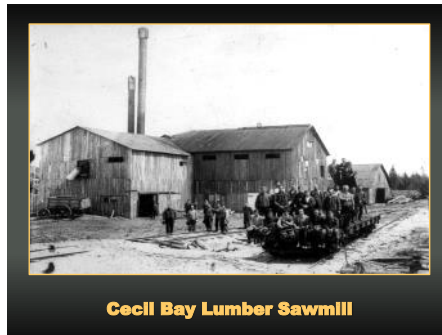


President's Message

February Meeting

The February meeting was held at 7:00pm at the Woodmen of the World Lodge in Greer on February 15, 2019. The program was presented by Glenn Andrews. 24 members and guests attended the meeting. The program centered on the true story of The Wreck of Old 97. In addition, Marshall Goers performed the Wreck of Old 97 folk song on his guitar and we all sang along.

Also the first annual presentation of the Red Caboose Award was made by Vice-President Steve Baker to David and Anne Winans for their extraordinary amount time and work done to promote and run the organization and the Hub City Railroad Museum.



Cecil Bay Lumber Sawmill

World Lodge in Greer on March 15, 2019. The program will be given by member Charlie Conn. The program is entitled "Ghosts of the North Woods—Logging Railroads of Emmet County". The program shows the development of the logging industry and the supporting communities of a typical Michigan county in the lumbering era.

Calendar of Events

Mark your calendars for the following events:

March 15, 2019 - CRHA meeting at the Woodmen of the World Lodge, 7:00pm.

March 16, 2019 – Piedmont 'N' Southern Modular RR Club N Scale layout at the Hub City Railroad Museum, 10:00 AM to 2:00pm.

March 23, 2019 – Train Show, Columbia, SC, 9:00AM to 3:00pm.

March 30, 2019 – TCA show, VFW

Post 5408, Acworth, GA

March 30, 2019 - NMRA Palmetto Division Meeting, Southern Wesleyan Univ., Central, SC

April 1, 2019 - CRHA Directors Meeting, Taylors Library, 6:30pm.

April 2, 2019 - Train Lovers' Lunch, 11:30 at the A&P Restaurant, Hwy 14, Greer, All Train Lovers invited.

April 13, 2019 – NMRA Palmetto Division Meeting, AMROC Model RR Club, Columbia, SC.

April 19, 2019 - CRHA meeting at the Woodmen of the World Lodge, 7:00pm.

April 27 & 28, 2019 – Train Show, Charleston, SC

May 11, 2019 – *Train Day* at the Spartanburg Depot.

May 17 & 18, 2019 – Clinton, SC Rail Festival

Caboose Renovation

The Caboose continues to be closed to the public during the ongoing renovation. We hope to have it back into service as soon as possible, but it appears that this will be a long-term situation. The spray foam insulation is basically removed. The interior of the metal shell will be treated with rust converter to prevent further metal oxidation. We are in the process of having new replacement window frames fabricated for all caboose windows. Thanks to Duane, Marv and Jim for all the time they have spent working in the

Continued on Page 3—President



Red Caboose Award ceremony.

March Program

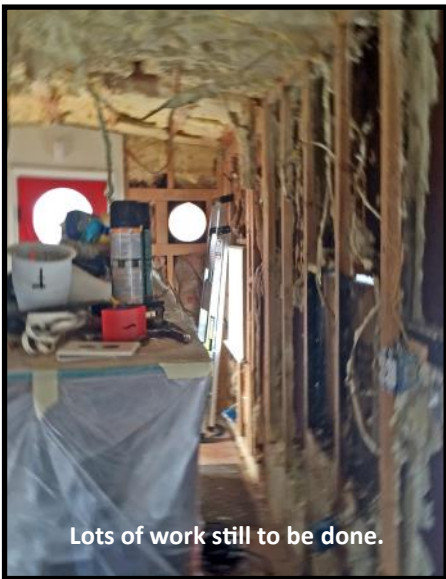
The March meeting will be held at 7:00pm at the Woodmen of the

Wanted—Articles for the Carolina Conductor

Submit an article of 200 words or more with some photos and captions and see them in print. Every one of us has some unique railroad experience that would make interesting reading for our membership. Your editor always needs more contributions of local railway history and news.

Continued from Page 2 —President

Caboose. In the interim, please visit the Museum. The HO model train inventory has been relocated to the Museum lobby. We have established a GoFundMe account to help with the renovation costs and appreciate all donations that are being made.



Lots of work still to be done.

If you would like to help with the renovation, please contact Duane Heard at 810-623-7444 or Dave Winans at 864-963-4739.

Charlie Conn receives Quilt of Valor

On March 2, 2019 RHA member Charlie Conn was presented with a Quilt of Valor at a ceremony held at Marietta's Quilt and Sew in Simpsonville. Quilt of Valor is a program to provide Veterans with a hand-made quilt in honor of their service to our Country. All Veterans are eligible.

Mark Your Calendars

The 2019 Train Day will be here before we know it. Mark your calendars for May 11, 2019. We are working on scheduling groups and vendors for the event. The Daily Basics Restaurant located in the Baber Rhyn Building will have a special Train Day menu with a number of lower priced kid's meals. The Aspen Shaved Ice Concession will be back again this year. Currently the Bounce House, Inflatable Crawl Through and Trackless Train have been booked.

The Piedmont 'N' Southern Modular Train Club will have their N Scale layout there. The Lionel Thomas and Friends layout, which is a hit with all the kids, will be there. Tentative commitments have been received from Hub City Kids, Model Trains Station, Palmetto Division NMRA, and the Central Model and Historical Society.

We will be contacting the Spartanburg Children's' Museum, our two book authors and others to see if they wish to participate this year. We are in the process of booking one or more railroad motorcars to be on display. The Watauga Valley Whistle Trailer will be at Train Day

with its variety of steam and air whistles. We are looking forward to a great event. Over 650 people visited last year and we expect even more this year. If you would like to help during the event, please let Dave Winans know. We can use as many volunteers as we can get. Parking is one area we want to have several volunteers help with since this was an issue last year.

Visit the Museum

If you have not been at the Museum lately you need to stop by and see the display on the WWI and WWII military camps that were in Spartanburg. Camp Wadsworth was a WWI training camp that was located in the area where the Westgate Mall currently is located. Camp Croft was a WWII Training Camp that was located where the State Park now resides. We will be changing our rotating display area shortly so if you want to see our WWI and WWII display please stop by soon. The original Roebuck Depot sign is now on display, thanks to AJ Martin and his family.

We also received a pair of antique caboose lanterns, thanks to Bruce Gathman. Although they are not the style that Southern Railway used, we still will be a great addition to Caboose X3115 when the renovation is completed. They will be temporarily located in the Museum for the interim.

February Minutes

Approved February Board of Director's Minutes are attached to the email newsletter.

Thanks,
Dave Winans, 864-963-4739
dwinans4739@charter.net



Anne Winans and Vicki Conn wrap Charlie Conn in Anne's Quilt of Valor during the ceremony.

Continued from Page 1 - SC Railroads

road boom in South Carolina in the 1850s, with railroad mileage increasing during the decade from 289 to 973, representing a capital investment of more than \$22 million in public and private funds. By 1860

vastly improved transportation system, commerce and cotton production in the upstate soared.

The Civil War seriously damaged railroads. Hundreds of miles of track were worn out or destroyed by Union forces, as were engines and

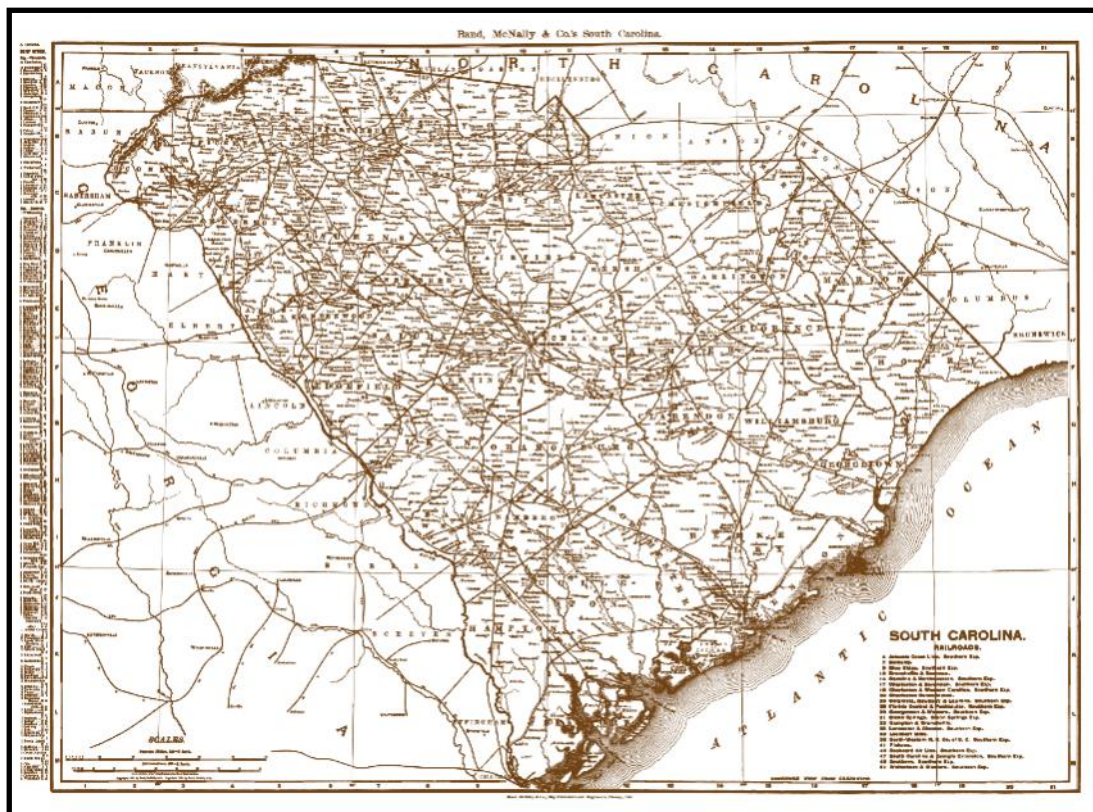
of dollars. Nevertheless, by 1877 more than 350 miles of new track had been added to prewar totals.

The last decades of the nineteenth century saw considerable railroad development. By the end of the century, South Carolina boasted

nearly four thousand miles of track. These new lines, which reached every county, resulted from several railroad-building strategies. Interstate "system building," which swept the region in the 1880s and 1890s, became the most important. Three outside companies, the result of an array of corporate mergers, leases, and construction, became dominant: Atlantic Coast Line (ACL), Seaboard Air Line (SAL), and Southern (SRR). By World War I the ACL covered the low country, with its main line connecting Wilming-

ton, North Carolina, with Savannah, Georgia, and serving Charleston and Florence. The SAL operated its principal stem between Hamlet, North Carolina, and Savannah, which served Columbia. This busy artery, made possible by the construction of ninety-one miles of new track between Cheraw and Columbia in 1900, largely superseded the earlier SAL route via Charleston. The main line of the Southern be-

Continued on Page 5 - SC Railroads



1900 Map of Railroads in South Carolina.

there were eleven railroads operating in the state, including two major arteries: the Charlotte and South Carolina Railroad, which connected Columbia with Charlotte, North Carolina; and the Greenville and Columbia Railroad. Railroads, and the accompanying economic boom of the 1850s, helped transform the state's upcountry. Existing towns along the railroads grew, and new towns, such as Rock Hill and Belton, came into existence. With a

rolling stock. New construction all but ceased during the war. Antebellum railroad companies emerged from the war deeply in debt, with most either failing or consolidating in the ensuing years. Reconstruction-era legislatures eagerly used the credit of the state to put South Carolina's railroads back in order, which also created a series of post-war scandals involving railroad managers and corrupt legislators who bilked the state treasury of millions

Continued from Page 4 - SC Railroads

tween Charlotte, North Carolina, and Atlanta, Georgia, sliced through the upstate with major facilities at Greenville and Spartanburg. But the SRR controlled a web of additional track that included the South Carolina Railroad and a Charlotte-Savannah line via Columbia.

Even though system building dominated, some earlier and even later short-lines remained outside the orbits of the “Big Three.” The Pickens Railroad, for example, chartered in 1892 to build a nineteen-mile road between Easley and Olenoy Gap via Pickens, in 1898 completed only a ten-mile segment between Pickens and Easley, where it connected with the SRR. The Pickens remains an independent short-line. Another illustration is the Lancaster & Chester Railway. This twenty-nine-mile short-line, which still served the communities of its corporate name as of the early twenty-first century, began in 1873 as the Cheraw & Chester Railway, one of only three narrow-gauge common carriers built in South Carolina. Although planned as a fifty-five-mile route between Lancaster and Cheraw, the company, like the Pickens Railroad, failed to realize its intended goals. After it was reorganized in 1896 as the Lancaster & Chester Railway, its owners wisely converted their property to standard gauge six years later and benefited from traffic generated from local cotton mills.

South Carolina experienced another type of short-line, the “tap” road. These pikes were usually not common carriers but were affiliates

of a single industrial operation, likely associated with timber or turpentine production. Examples abound. In order to serve its mill in Summerville, the D. W. Taylor Lumber Company in 1880 built a fourteen-mile private railroad to reach stands of trees in the Wassamassaw Swamp of Berkeley County. Until abandonment in mid-1920s, this tap road expanded and contracted under various corporate banners.

The “Railway Age” in South Carolina lasted until after World War I. With greater usage of automobiles, buses, and trucks, which traveled over ever-improving public roads, the need for freight and passenger trains diminished. Yet, mileage did not shrink dramatically until the 1960s, eventually declining to fewer than 2,400 miles. The diffi-

Seaboard Coast Line (SCL), and in 1980 SCL joined with the Chesapeake & Ohio system to create CSX. Then in 1982 the Southern merged with Norfolk & Southern, producing Norfolk Southern (NS). With development of two dominant carriers in South Carolina, CSX and NS, hundreds of unwanted miles were either abandoned or sold to existing or new short-line operators. The Waccamaw Coast Line Railroad is an example. In 1984 CSX wished to dispose of its fourteen-mile branch between Conway and Myrtle Beach. In order to continue movement of forest products and other bulk commodities, Horry County bought the line and leased it to the newly formed Horry County Railroad. Three years later the county leased the property to



South Carolina Railroad \$5.00 Fare Ticket.

culty of winning regulatory permission to abandon lessened with the Transportation Act of 1958 and other legislative measures. Moreover, appendages and even secondary and main lines became less desired by major carriers as a result of corporate mergers, which affected every one of the state’s three primary railroads. In 1967 the ACL and SAL combined to form the

the Waccamaw Coast Line.

In the twenty-first century, railroads in South Carolina remained vital arteries of freight transport. The few remaining passenger trains, operated by the National Railroad Passenger Corporation (Amtrak), created in 1971, served principal stations along the former ACL, SCL, and SRR.

South Carolina Railroad All Time List

<u>Railroad Name</u>	<u>Reporting Mark</u>	<u>System</u>	<u>From</u>	<u>To</u>	<u>Successor Railroad</u>
Air Line RR in South Carolina	SOU		1856	1870	Atlanta & Richmond Air-Line Rwy
Alcolu RR		ALU	1902	1936	N/A
Asheville & Spartanburg RR		SOU	1881	1902	Southern Rwy-Carolina Division
Ashley River RR		ACL	1876	1901	Savannah, Florida & Western Rwy
Atlanta & Charlotte Air Line Rwy		SOU	1877	1996	Norfolk Southern Rwy
Atlanta & Richmond Air-Line Rwy		SOU	1870	1876	South Carolina Air-Line Rwy
Atlantic Coast Line RR	ACL	ACL	1898	1967	Seaboard Coast Line RR
Atlantic & French Broad Valley RR		SOU	1879	1882	French Broad & Atlantic Rwy
Atlantic, Greenville & Western Rwy		ACL	1885	1887	Carolina, Knoxville & Western Rwy
Atlantic & Northwestern RR		SOU	1885	1887	Georgia & Carolina Midland RR
Augusta & Edgefield RR		SOU	1884	1885	Augusta, Edgefield & Newberry RR
Augusta, Edgefield & Newberry RR		SOU	1885	1887	Georgia & Carolina Midland RR
Augusta & Knoxville RR		ACL	1880	1886	Port Royal & Western Carolina Rwy
Augusta, Knoxville & Greenwood RR		ACL		1880	Augusta & Knoxville RR
Augusta Northern Rwy			1912	1941	N/A
Bamberg, Ehrhardt & Walterboro Rwy			1913	1938	N/A
Barnwell Rwy		SOU	1882	1891	Carolina Midland Rwy
Belton, Williamston & Easley RR		SOU	1878	1879	Atlantic & French Broad Valley RR
Bennettsville & Cheraw RR	B&CW		1902	1950	N/A
Bennettsville & Osborne RR			1899	1902	Bennettsville & Cheraw RR
Berkeley RR			1892	1906	N/A
Bishopville RR		ACL	1882	1892	South & North Carolina RR
Blackville & Alston RR		SOU	1885	1886	Blackville, Alston & Newberry RR
Blackville, Alston & Newberry RR		SOU	1886	1891	Carolina Midland Rwy
Blue Ridge RR of South Carolina		SOU	1852	1880	Greenville & Columbia RR
Blue Ridge Rwy	BLR	SOU	1901		
Branchville & Bowman RR			1890	1925	N/A
Buffalo Union-Carolina RR			1922	1971	N/A
Cape Fear & Yadkin Valley Rwy		ACL	1881	1898	Wilmington & Weldon RR
Carolina, Atlantic & Western Rwy		SAL	1914	1915	Seaboard Air Line Rwy
Carolina, Clinchfield & Ohio Rwy of South Carolina		ACL/L&N	1909	1990	CSX Transportation
Carolina & Cumberland Gap Rwy		SOU	1896	1898	SOU
Carolina, Cumberland Gap & Chicago Rwy		SOU	1882	1895	Carolina & Cumberland Gap Rwy
Carolina, Knoxville & Western Rwy		ACL	1887	1899	Charleston & Western Carolina Rwy,
Greenville & Knoxville Rwy					
Carolina Midland Rwy		SOU	1891	1902	Southern Rwy-Carolina Division
Carolina Northern RR		SAL	1899	1905	Raleigh & Charleston RR
Carolina & Northwestern Rwy	CRN	SOU	1982	1988	Southern Rwy
Carolina & Northwestern Rwy	CR&N	SOU	1900	1974	Norfolk Southern Rwy
Carolina Western RR	CARW		1923	1971	Seaboard Coast Line RR
Carolina & Western RR			1902	1916	
Catawba Valley Rwy		SAL	1906	1909	Seaboard Air Line Rwy
Central RR of South Carolina		ACL	1878		Still exists as a lessor of CSX
Central of Georgia RR	CG	SOU	1971	1972	N/A
Charleston, Cincinnati & Chicago RR		SOU	1888	1893	Ohio River & Charleston Rwy
Charleston & Northern RR		ACL	1895	1895	Cheraw & Darlington RR, Manchester & Augusta RR, Wilson & Summerton RR
Charleston Northern Rwy		SAL	1913	1914	North & South Carolina Rwy
Charleston & Savannah RR		ACL	1853	1867	Savannah & Charleston RR
Charleston & Savannah Rwy		ACL	1880	1901	Savannah, Florida & Western Rwy
Charleston Southern Rwy		SAL	1915	1915	North & South Carolina Rwy
Charleston, Sumter & Northern RR		ACL	1890	1895	Charleston & Northern RR
Charleston Terminal Co		ACL/SOU	1903	1921	
Charleston Union Station Co		ACL/SOU	1902	1970	N/A
Charleston & Western Carolina Rwy	C&WC, CWC	ACL	1896	1959	Atlantic Coast Line RR
Charlotte, Columbia & Augusta RR		SOU	1869	1894	SOU
Charlotte, Monroe & Columbia RR		SAL	1901	1940	N/A
Charlotte & South Carolina RR		SOU	1846	1869	Charlotte, Columbia & Augusta RR
Cheraw & Chester RR			1873	1896	Lancaster & Chester Rwy
Cheraw & Coalfields RR		ACL	1867	1868	Cheraw & Salisbury RR
Cheraw & Darlington RR		ACL	1849	1898	Atlantic Coast Line RR
Cheraw & Salisbury RR		ACL	1868	1882	Cheraw & Darlington RR
Chester, Greenwood & Abbeville RR		SAL	1885	1886	Georgia, Carolina & Northern Rwy
Chester & Lenoir Narrow Gauge RR		SOU	1873	1897	Carolina & Northwestern Rwy
Chesterfield & Kershaw RR		SAL	1889	1901	Seaboard Air Line Rwy
Chesterfield & Lancaster RR		SAL	1887	1941	N/A
Cincinnati & Charleston RR		SOU	1835	1836	Louisville, Cincinnati & Charleston RR
Clinchfield RR	CRR	ACL/L&N	1924	1983	Seaboard System RR
Colleton County RR	CCYR		1986	1988	Hampton & Branchville RR
Columbia & Augusta RR		SOU	1863	1869	Charlotte, Columbia & Augusta RR

Continued on Page 7 - SC Railroad List

Carolina Conductor

Continued from Page 6 - SC Railroad List

Columbia & Greenville RR		SOU	1880	1894	Blue Ridge Rwy, Southern Rwy
Columbia & Hamburg RR		SOU	1858	1863	Columbia & Augusta RR
Columbia, Newberry & Laurens RR	CNL	ACL	1886	1984	Seaboard System RR
Columbia & Sumter RR		ACL	1866	1870	Wilmington, Columbia & Augusta RR
Columbia Union Station Co		ACL/SOU	1900	1971	N/A
Conway Coast & Western RR		ACL	1904	1912	Atlantic Coast Line RR
Conway Seashore RR		ACL	1899	1904	Conway Coast & Western RR
Due West Rwy			1907	1940	N/A
Duval Transportation of the Carolinas			1987	1987	Mid Atlantic RR
East Shore Terminal Co		ACL/SOU	1887	1903	Charleston Terminal Co
Eddy Lake & Northern RR			1905		
Edgefield Branch RR		SOU	1878	1879	Edgefield, Trenton & Aiken RR
Edgefield, Trenton & Aiken RR		SOU	1879	1882	French Broad & Atlantic Rwy
Edgemoor & Manetta Rwy	EM		1902	1976	N/A
Eutawville RR		ACL	1885	1890	Charleston, Sumter & Northern RR
Florence RR		ACL	1882	1898	Atlantic Coast Line RR
Florence & Fayetteville RR		ACL	1861	1881	Cape Fear & Yadkin Valley Rwy
Florida Central & Peninsular RR		SAL	1893	1900	Seaboard Air Line Rwy
French Broad & Atlantic Rwy		SOU	1882	1882	Carolina, Cumberland Gap & Chicago Rwy
Georgetown & Lane's RR		SAL	1881	1887	Georgetown & Western RR
Georgetown & North Carolina RR		SOU	1882	1885	Charleston, Cincinnati & Chicago RR
Georgetown & North Carolina Narrow Gauge RR		SOU	1878	1882	Georgetown & North Carolina RR
Georgetown & Western RR		SAL	1887	1915	Carolina, Atlantic & Western Rwy
Georgia & Carolina Midland RR		SOU	1887	1887	Charleston, Cincinnati & Chicago RR
Georgia, Carolina & Northern Rwy		SAL	1886	1901	Seaboard Air Line Rwy
Georgia & Florida RR	G&F	SOU	1926	1963	Georgia & Florida Rwy
Georgia & Florida Rwy	G&F, GF	SOU	1963	1971	Central of Georgia RR
Glenn Springs RR			1894	1911	N/A
Green Pond, Walterboro & Branchville RR		ACL	1900	1901	Savannah, Florida & Western Rwy
Green Pond, Walterboro & Branchville Rwy		ACL	1887	1900	Green Pond, Walterboro & Branchville RR
Greenville & Columbia RR		SOU	1845	1880	Columbia & Greenville RR
Greenville & Knoxville RR			1904	1914	Greenville & Western Rwy
Greenville & Laurens RR		ACL	1878	1886	Port Royal & Western Carolina Rwy
Greenville & Northern Rwy	GRN		1920	1997	Carolina Piedmont RR
Greenville & Port Royal RR		ACL	1882	1885	Atlantic, Greenville & Western Rwy
Greenville & Western RR			1914	1920	Greenville & Northern RR
Greenville & Western Rwy			1911	1969	
Greenwood, Anderson & Western Rwy		SOU	1895	1897	Sievern & Knoxville RR
Greenwood, Laurens & Spartanburg RR		ACL	1880	1886	Port Royal & Western Carolina Rwy
Hampton & Branchville RR & Lumber Co	HB		1891	1924	Hampton & Branchville RR
Hartsville RR		ACL	1884	1895	Cheraw & Darlington RR
Horry County Rwy	HCYR		1984	1987	Waccamaw Coast Line RR
Kings Mountain RR		SOU	1848	1874	Chester & Lenoir Narrow Gauge RR
Laurens RR		ACL	1847	1881	Laurens Rwy
Laurens Rwy		ACL	1879	1895	Columbia, Newberry & Laurens RR
Lockhart RR		SOU	1899		N/A
Louisville, Cincinnati & Charleston RR		SOU	1836	1843	South Carolina RR
Manchester & Augusta RR		ACL	1870	1898	Atlantic Coast Line RR
Marion County Rwy			1984	1985	N/A
Marion & Southern RR		SAL	1907	1937	N/A
Mid Atlantic RR	MRR		1987	1995	Carolina Southern RR
Newberry & Laurens RR		ACL	1885	1886	Columbia, Newberry & Laurens RR
Newberry, Whitmire & Augusta RR			1906	1910	Augusta Northern Rwy
Norfolk Southern Rwy	NS	SOU	1974	1982	Carolina & Northwestern Rwy
North Charleston Terminal Co		ACL/SAL/SOU	1916		Still exists as a joint subsidiary of CSX & NS
North & South Carolina Rwy		SAL	1908	1914	Carolina, Atlantic & Western Rwy
Northeastern RR		ACL	1851	1898	Atlantic Coast Line RR
Northwestern RR of South Carolina		ACL	1899	1935	N/A
Ohio River & Charleston Rwy		SOU	1894	1898	South Carolina & Georgia Extension RR
Orangeburg Rwy			1911	1920	N/A
Palmetto RR		SAL	1882	1895	Palmetto Rwy
Palmetto Rwy		SAL	1895	1900	Seaboard Air Line Rwy
Pee Dee Bridge Co		SAL	1911	1915	Carolina, Atlantic & Western Rwy
Pickens RR	PICK		1892	1996	Pickens Rwy
Piedmont & Northern Rwy	P&N		1911	1969	Seaboard Coast Line RR-Electric until 1954
Plant System		ACL	1894	1902	Atlantic Coast Line RR
Port Royal RR		ACL	1856	1878	Port Royal & Augusta Rwy
Port Royal & Augusta Rwy		ACL	1878	1896	Charleston & Western Carolina Rwy
Port Royal & Western Carolina Rwy		ACL	1886	1896	Charleston & Western Carolina Rwy
Raleigh & Augusta Air Line RR		SAL	1878	1901	Seaboard Air Line Rwy
Raleigh & Charleston RR		SAL	1905	1941	N/A
Raleigh & Gaston RR		SAL	1889	1900	Seaboard Air Line Rwy
Richmond & Danville RR		SOU	1879	1894	Southern Rwy
Rockingham RR	RKG	ACL	1910	1968	N/A

Continued on Page 8 - SC Railroad List

Continued from Page 7 - SC Railroad List

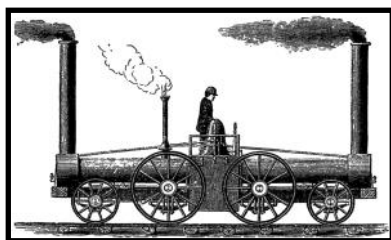
Rockton & Rion Rwy	ROR		1932	1981	N/A
Savannah & Charleston RR		ACL	1866	1880	Charleston & Savannah Rwy
Savannah, Florida & Western Rwy		ACL	1901	1902	Atlantic Coast Line RR
Savannah Valley RR		ACL		1886	Port Royal & Western Carolina Rwy
Seaboard Air Line RR	SAL	SAL	1946	1967	Seaboard Coast Line RR
Seaboard Air Line Rwy		SAL	1900	1945	Seaboard Air Line RR
Seaboard Air Line System		SAL	1893	1900	Seaboard Air Line Rwy
Seaboard Coast Line RR	SCL		1967	1983	Seaboard System RR
Seaboard & Roanoke RR		SAL	1889	1900	Seaboard Air Line Rwy
Seaboard System RR	SBD		1983	1986	CSX Transportation
Sievern & Knoxville RR		SOU	1898	1933	N/A
South & North Carolina RR		ACL	1892	1996	Manchester & Augusta RR
South Bound RR		SAL	1882	1901	Seaboard Air Line Rwy
South Carolina RR		SOU	1843	1881	South Carolina Rwy
South Carolina Canal & RR Co		SOU	1827	1844	South Carolina RR
South Carolina Rwy		SOU	1881	1894	South Carolina & Georgia RR
South Carolina Air-Line Rwy		SOU	1877	1877	Atlanta & Charlotte Air Line Rwy
South Carolina & Georgia RR		SOU	1894	1902	Southern Rwy – Carolina Division
South Carolina & Georgia Extension RR		SOU	1898	1902	Southern Rwy – Carolina Division
South Carolina Pacific Rwy		ACL	1882	1984	Seaboard System RR
South Carolina Terminal Co		ACL/SOU	1893	1903	Charleston Terminal Co
South Carolina Western Rwy		SAL	1910	1914	North & South Carolina Rwy
South Carolina Western Extension Rwy		SAL	1913	1914	North & South Carolina Rwy
South & North Carolina RR		ACL	1892	1896	Manchester & Augusta RR
South & Western RR		ACL/L&N	1908	1909	Carolina, Clinchfield & Ohio Rwy of SC
Southern Rwy	SOU	SOU	1894	1990	Norfolk Southern Rwy
Southern Rwy – Carolina Division		SOU	1902	1996	Norfolk Southern Rwy
Spartanburg & Asheville RR		SOU	1873	1881	Asheville & Spartanburg RR
Spartanburg & Union RR		SOU	1847	1873	Spartanburg, Union & Columbia RR
Spartanburg, Union & Columbia RR		SOU	1878	1896	Asheville & Spartanburg RR
Sumter & Wateree River RR		SOU	1898	1902	Southern Rwy – Carolina Division
Union, Gaffney City & Rutherfordton RR		SOU	1878	1885	Atlantic & Northwestern RR
Union & Glenn Springs RR			1899	1922	Buffalo Union-Carolina RR
Walterboro & Western Rwy		ACL	1894	1900	Green Pond, Walterboro & Branchville RR
Ware Shoals RR	WS		1908	1985	N/A
Williamsburg RR		ACL	1876	1878	Central RR of South Carolina
Wilmington & Carolina RR		ACL	1870	1870	Wilmington, Columbia & Augusta RR
Wilmington, Chadbourn & Conway RR		ACL	1885	1895	Wilmington & Conway RR
Wilmington, Columbia & Augusta RR		ACL	1870	1898	Atlantic Coast Line RR
Wilmington & Conway RR		ACL	1895	1896	Wilmington, Columbia & Augusta RR
Wilmington & Manchester RR		ACL	1846	1870	Wilmington & Carolina RR
Wilmington & Weldon RR		ACL	1899	1900	Atlantic Coast Line RR
Wilson & Summerton RR		ACL	1888	1899	Northwestern RR of South Carolina

Electric

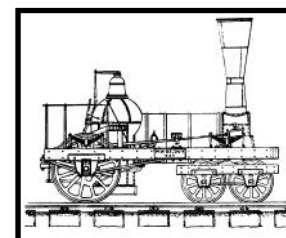
Anderson Traction Co
 Augusta – Aiken Rwy & Electric Corp
 Charleston Consolidated Rwy & Lighting Co
 Charleston – Isle of Palms Traction Co
 Greenville, Spartanburg & Anderson Rwy
 Piedmont & Northern Rwy

Private Carriers

Winnboro Granite Corp



South Carolina RR the first 8-wheel loco.



South Carolina RR the E.L. Miller—1834



CHECK OUT THE CRHA:
WWW.HUBCITYRRMUSEUM.ORG/CAROLINA-RAILROAD-HERITAGE-ASSOCIATION
WWW.FACEBOOK.COM/GROUPS/CRHA/NC/



CHECK OUT THE HCRMM:
WWW.HUBCITYRRMUSEUM.ORG
WWW.FACEBOOK.COM/HUBCITYRRMUSEUM/